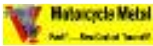


# Fast...Now Control Yourself!



- [Home Index](#)
- [Welcome Pg. 1](#)
- [Touring Family](#)
- [Dyna/FXR/Sportster](#)
- [Softail Family](#)
- [DIY](#)
- [History](#)
- [Contact Us](#)
- [Basic: How Different](#)
- [Dyna/FXR/Sportster](#)
- [Touring Ohlins](#)
- [Sagger Gas Tank](#)
- [Inverted Fork Packa](#)
- [E-mail](#)

Touring Ohlins



We actually ride a motorcycle and can explain why your Harley needs good suspension. See below for shock description than either call toll free 1-866-899-5962 or e-Mail us for your price.

We can build you special application shocks in house if any of the lengths or models will not suffice.

Why put any performance product if it is not tailored to your specifications?

- This includes the weight of the rider (you) + the weight of your passenger
- If your riding style is: 70% one up/30% two up or the opposite 70% two up/30% one up.
- Your riding style also includes but not limited to:
  - if you are a weekend cruiser or a thrill seeking, corner carving performance rider.

### Öhlins

shocks sold by Motorcycle Metal are built for you either at the factory when special ordering or by us, people with actual tools and training to become an Authorized Service Center. All work is done by actual people who are riding Harley's with Ohlins shocks already tested and approved by us. We are not some discount on-line store that provides no support after the sale!

If necessary, we strip and rebuild your shocks, modifying spring rates, and set them up to your exact specifications. We do this at no additional charge, and because we do this before shipping the products to you, you save on reshipping them and the cost of subsequent tuning. When servicing is necessary just send them back to us and in a day or two (depending on availability of parts for replacement). When you purchase from motorcyclemetal.com, this is the service we provide.

Please read "Basic: What's The Difference in Shocks and How They Work?" [LINK](#)

**Please call for a price and fill out the order form found [HERE](#)**

[If you can not see shock #6 than download the page in either PDF or HTML, HTML is better looking \[LINK\]\(#\)](#)

**MSRP: \$1,041.60**



#1

36 mm Piston/**Emulsified**, Chrome  
Length:

- 1. 12"/305 mm      Stroke: 2 7/16"/88 mm

- 6. 12.59"/320 mm      Stroke: 2 1/2"/64 mm
- 7. 12.95"/329 mm      Stroke: 3 5/16"/84 mm

**MSRP: \$1,041.60**

.....  
**MSRP: \$640.00**



**#2**

**36 mm Piston/Emulsified**

- 1. 11 5/8"/296 mm      Stroke: 2 3/4"/71 mm
- 2. 12"/305 mm          Stroke: 2 1/2"/65 mm
- 3. 13 1/4"/337 mm      Stroke: 4 3/32"/104 mm
- 4. 13 3/8"/340 mm      Stroke: 3 7.5/16"/88 mm

**MSRP: \$640.00**

.....  
**MSRP: \$874.65**



#3

**36 mm Piston/Separated**

All but #1 Externally Adjustable Length, All have externally adjustable Compression & Rebound (sweep Valve), Spring Preload Length:

**Length Conversion**

1. **NEW PRODUCTS** 307 mm **no length adjustment** 12" **Only** Stroke: 2 5/8"/67mm This shock is the lowest you can go with (3/16" clearance fully compressed)
2. 325 +5mm/-5 mm = low of 12 19/32"~almost 13" Stroke: 2 5/8"/67mm
3. 329 +5mm/- 5 mm = low of 12 3/4"~13 9/64 Stroke: 3 1/32"/77mm
4. 336 +10mm/-0 mm = low of 13 7/32"~ 13.21/32" Stroke: 3 1/32"/77mm

Color Choice Spring:Black or Yellow

**MSRP: \$874.65**

All of the above H.D. shocks are delivered as pairs.

★ **#6**

**13.25" Length are the first ones made**

**Future Shocks in Development** They are Here!! Will be tested this week & next!

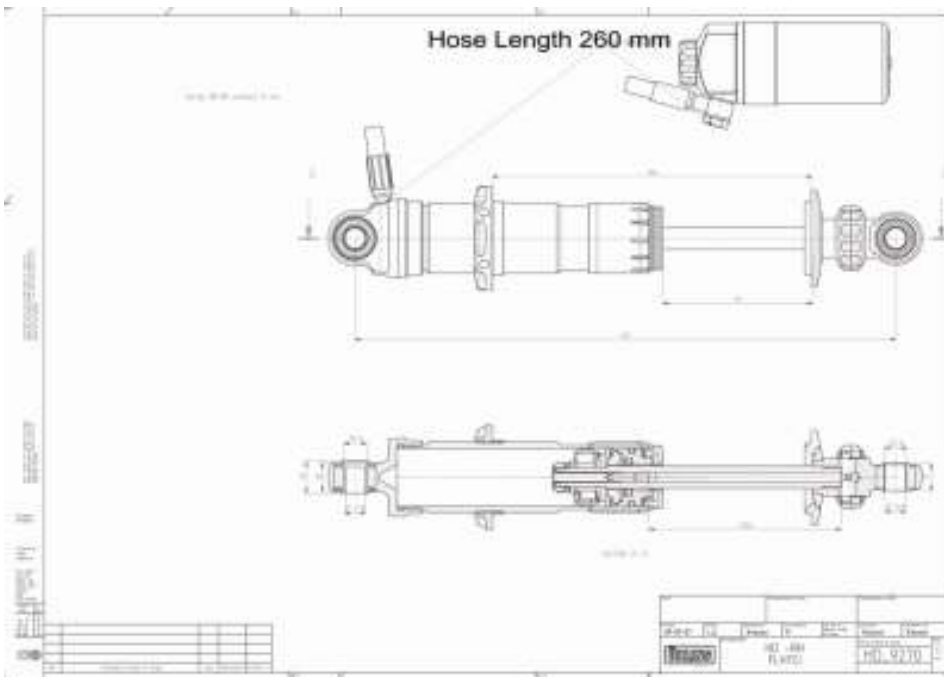
**Updated News as of 10-29-09:**


\* These new shocks have been in development for more than seven months. These shocks are designed to be the absolute best in the Harley Davidson FL series Touring bike.

External Remote Reservoir, Externally Adjustable: Compression, Rebound, Spring Preload Separated

1. 13 1/4"/337 Stroke: 3 5/8"/93 mm

As you can see the banjo fitting on the shock body side needs to be changed to a 90 degree one. Another week!



Well here it is, the absolute best purpose built shock in the world to date bar none for the FL Series! 

Whats next? Imagine adjusting your shocks from your dash board? Yes it can be done! Ohlins has developed the "Mechatronic" system (Mechatronic Controlled Suspension). This system is a small actuators that can be retrofitted into existing TTX Ohlins series shocks replacing the compression and rebound adjuster parts.

**TTX:**



---

[Home Index](#) | [Welcome Pg: 1](#) | [Touring Family](#) | [Dyna/EXR/Sportster Family](#) | [Softail Family](#) | [DIY](#) | [History](#) | [Contact Us](#) | [Basic: How Different Shocks Work](#) | [Dyna/EXR/Sportster Ohlins](#) | [Touring Ohlins](#) | [Bagger](#)